

2020 Scorecard

Our scorecards give information about our client groups and their rehabilitation outcomes. Intensive rehabilitation has a goal of three hours of therapy per day.



Inpatient Rehabilitation in Auckland



183 Number of persons served in 2020

4% under 18
96% age 18 or older

Health status: **30** clients returned to hospital in 2020 (not including pre-planned procedures)

"Overall, how satisfied were you with the service we provided?"

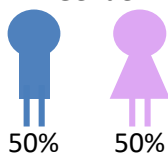
93% of clients, and
98% of family-whānau...
...answered
Satisfied or Very Satisfied.

Under-18 clients

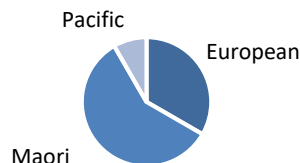
Age

Average: 17 years
(Range: 15-17)

Gender



Ethnicity



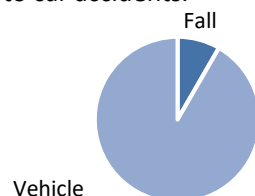
88% of under-18 clients had a traumatic brain injury.

Under-18 clients stayed for an average of 20 days (range: 1-61 days).

Functionally, under-18 clients improved by an average of 25 FIM points.

100% of clients were discharged to home.

TBIs were most often due to car accidents.

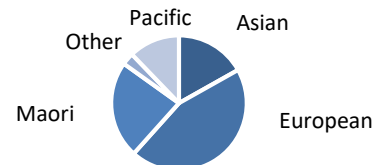


Over-18 clients

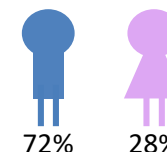
Age

Average: 48 years
(Range: 18-98)

Ethnicity



Gender



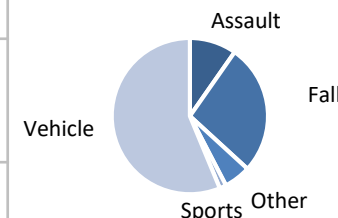
87% of 18+ clients had a traumatic brain injury (TBI).

TBI clients stayed for an average of 46 days (range: 1 - 260 days).

Functionally, TBI clients improved by an average of 24 FIM points.

85% of TBI clients were discharged to home.

TBIs were most often due to car accidents and falls.



13% of 18+ clients had a stroke or non-traumatic brain injury.

This group of clients stayed for an average of 77 days (range: 1 – 212 days).

Functionally, clients improved by an average of 21 FIM points.

55% of clients were discharged to home.