

2014 Outcomes

Inpatient Rehabilitation In Wellington

ABI Rehabilitation is New Zealand's largest provider of rehabilitation for traumatic brain injury (TBI). ABI Rehabilitation has inpatient facilities in Auckland and Wellington.



Number of persons served in 2014:

68

Percent who had TBIs: approximately

85%

Genders:

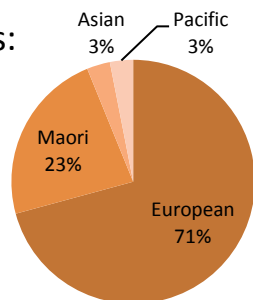


68%
men

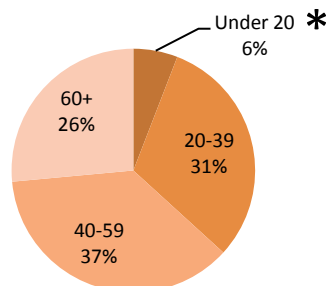


32%
women

Ethnicities:

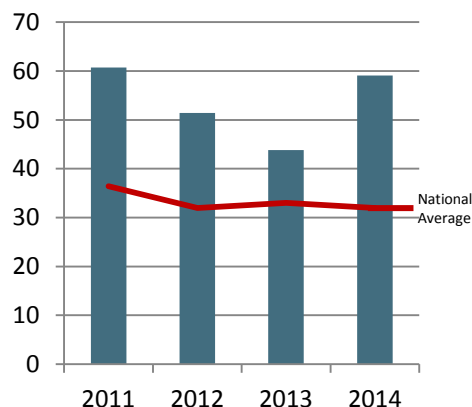


Ages:



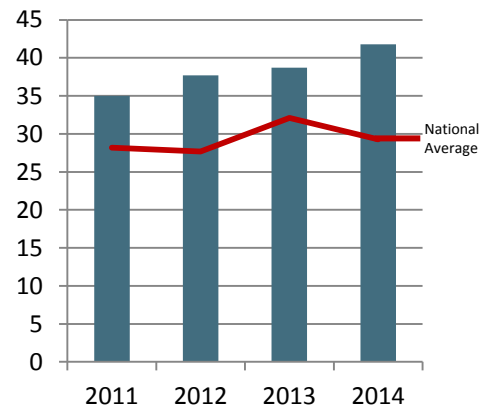
Average age at admission: 46

Length of Stay in Rehab (Days)



On average across 2014, clients stayed in rehab for 59 days. This longer than the national average, but clients also achieved better-than-average functional outcomes (next chart).

Functional Improvement During Rehab (FIM™ Points)



The FIM assessment is done at the beginning and end of rehab. Higher scores mean that the client is able to do more things for themselves.

Percent of clients who went home after inpatient rehab:

100%

This is better than the national average of **84%**.

Most clients have further rehab in the community.

“Overall, how satisfied were you with the service we provided?”

100% and **100%**
of clients and of family-whānau

Answered ‘Satisfied’ or ‘Very Satisfied’.

* Outcomes for Adolescents

Although ABI Rehabilitation’s inpatient rehabilitation is primarily a programme for adults, we served two 17-year-olds with TBIs in 2014. The teens stayed at the rehab centre for a shorter time (on average, 40 days fewer) and had similar outcomes to other clients: both went home after rehab.